

Download Anzio Lite[™]

If you do not have HyperTerminal, you must download and install Anzio Lite software.

1. Go to www.dataquick.com and click **Products and Services**.
2. Under the Research heading, click **Online**.
3. Click **Download Software**.
4. When prompted, save the file to your desktop. Click **Close** when the download is complete.
5. Double-click the **anzulsetup** icon on your desktop.
6. Click **Yes** or **Next** at each prompt to finish the installation.
7. Go to www.dataquick.com and click **Products and Services**.
8. Under the Research heading, click **Online**.
9. Click **Log In Now!**. Anzio displays a 15 second countdown.
10. If Anzio asks you for a terminal type, select **VT220** and click **OK**.
11. Click **File** and click **Save Defaults**.
12. To continue, see **Log On to Data Quick Online** (page 2).

Note: If you have HyperTerminal, you do not need to download Anzio Lite.

Welcome to the Foreclosure Database!

When you log on to the Foreclosure Database with DataQuick[®] Online[™], you'll have access to foreclosure data that includes, Notices of Default, Notices of Trustee Sales, and Real Estate Owned (REO) Properties (Availability varies by county).

We want your first experience using DataQuick Online to be as smooth as possible. We've provided a few simple steps to get you started using this powerful program:

How to Get Started

Follow the steps below. See the details for each step on the pages that follow.

1. Check for HyperTerminal (page 1).
2. Set up HyperTerminal (page 2).
3. Log On to DataQuick Online (page 2).
4. Set up Privacy Registration (page 3).

Using the Foreclosure Database

Follow the steps below. See the details for each step on the pages that follow.

1. Access the Foreclosure Database (page 3).
2. Locate Target Properties (page 4).
3. Download Data (page 5).
4. Format your Data with ListTools (page 6).

Check for HyperTerminal

HyperTerminal is a program you use to connect to DataQuick Online. To check for HyperTerminal:

1. Click the Windows **Start** button.
2. Point to **Programs** and point to **Accessories**.
3. Point to **Communications**.
4. If HyperTerminal displays in the Communications Menu, follow the instructions to set up HyperTerminal. If you do not have HyperTerminal, follow the instructions in the panel to the left to install Anzio Lite.

Start HyperTerminal

1. Click the Windows **Start** button.
2. Point to **Programs**.
3. Point to **Accessories**.
4. Point to **Communications**.
5. Click **HyperTerminal**.

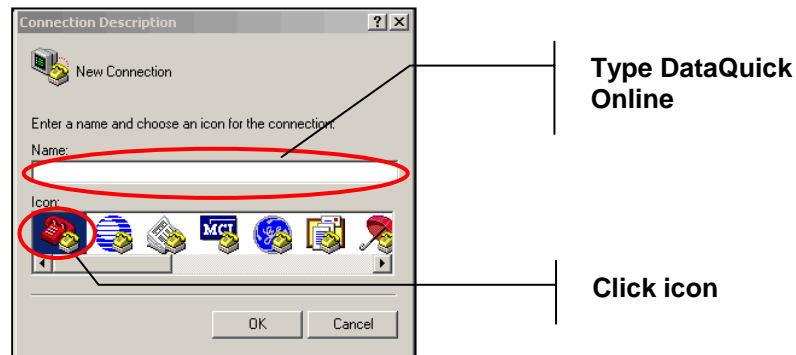
Set Up HyperTerminal

You must have your Internet connection running to connect to DataQuick Online.

1. Start HyperTerminal. The Connection Description Box displays.

Note: If the Connection Description box does not display, click **File** and **New Connection**.

2. In the Connection Description box, type **DataQuick Online** in the **Name** field.
3. Click any icon in the **Icon** field and click **OK**.



4. In the Connected To box, click **TCP/IP(Winsock)** in the **Connect Using** list.
5. In the Connected To box, type **online.dataquick.com** in the **Host Address** field.
6. Click **OK**. If you're connected properly, you'll see **WELCOME TO DIN, PLEASE LOGON**.
7. Click **File** and click **Save As**.
8. Click **Desktop** from the **Save In** list and click **Save**.

Log On to DataQuick Online

1. Click  (DataQuick Online icon on your desktop).

Note: If you are using Anzio Lite, go to www.dataquick.com, click the drop-down arrow in the **Product Log In** list, and click **Online**.

2. Type your Account Login ID after **WELCOME TO DIN, PLEASE LOG IN >** and press **ENTER**.
3. Type your password after **ENTER PASSWORD >** and press **ENTER**. Your password will not display as you enter it.

Keyboard Quick Tips

Move Back One Step
Type **!** (exclamation point) then press **Enter**.

Stop Search in Progress
Type ***** (asterisk) and press **Enter**.

Search a Range
Type **-** (hyphen) as in 94170-094725

Separate Criteria
Type **,** (comma) as in 947,957,958.

DataQuick Privacy

To view additional details about DataQuick Privacy:

1. Go to the DataQuick Privacy Registration Menu.
2. Type **D**.
3. Press **ENTER**.

Setup Privacy Registration

The Foreclosure Database in DataQuick Online may include some properties on the Do Not Call or Do Not Mail List. To create marketing lists, you need to set up Online's Privacy Registration to exclude these properties from your list.

1. Logon DataQuick Online. From the Database Menu, Type **5** and press **ENTER**.
2. Type **A** and press **ENTER** to register online.
3. Type **K** and press **ENTER** to choose the Foreclosure Database.
4. Type the letter code for the purpose of your search (Example: Type **M** if you are performing mail marketing searches). Press **ENTER**.
5. Type **Y** to confirm your choice and press **ENTER**.
6. Type **2** and press **ENTER** to return to the Registration Menu.
7. Type **E** and press **ENTER** to return to the Database Menu.

Access the Foreclosure Database

1. Logon to DataQuick Online.
2. At the Database Menu, type **K** after Enter Option > and press **ENTER**.

```

ENTER PASSWORD >
  DATAQUICK INFORMATION NETWORK
===== 05/11/2005 ===== DATABASE MENU ===== 2:39 pm =====

A. Real Estate Data           J. Flood Zone Data
B. Statewide Searches        K. Foreclosure Data
D. Verifacts                 L. Property History / Doc # Search
E. BusinessLink              O. Demographic/Trend Report
G. New Homes/New Owners      P. Demographic Marketing System
I. Mortgage Leads           R. National Property Records

1. Help * *2400bd,etc* *      4. Pricing & Accounting Info.
2. End Session                5. DataQuick Privacy Set Up
3. DQ Software & FAX

For more information or downloadable help, visit our web site at
                               www.dataquick.com
=====

Enter Option > K
  
```

3. Online displays a reminder of privacy settings for your account. Press **ENTER**.
4. Online displays a disclaimer regarding the accuracy and compilation of the Foreclosure data. Press **ENTER**.

Default Type Menu

This menu allows you to choose the type of foreclosure data in your search.

Matched and Unmatched Records

Matched records are complete records that contain both the default and property information. Unmatched records are incomplete records that only contain the default information and do not include property address or description.

Notices of Default

Search for properties where property owners go into default with their trust deed.

Notice of Default records remain in the database for 180 days unless a Notice of Trustee Sale is filed.

Notices of Trustee Sales

Search for Notices of Trustee Sales to view properties that are scheduled for trustee sale. These records will provide you with the sale date and time, where the sale will be held, and the opening bid. Opening bid may not be available in all counties.

Notice of Trustee Sale records remain in the database for 111 days unless the property transfers ownership.

REOs

Search for REOs to purchase repossessed properties from a lender. You can enter all or a portion of the lender name for your search.

REO records remain in the database until the property is sold.

Locate Target Properties

1. At the State Menu, type the number of the selected state and press **ENTER**.
2. At the County Menu, type the number of the selected county and press **ENTER**.

Note: When you choose your county, the latest recording date displays at the top of the screen. Take note of the date as you may need this information later in your search.

3. At the Default Types Menu, type **1** for Notices of Defaults – Matched to avoid missing data and press **ENTER**. (See descriptions in left panel).

##	SEARCH OPTIONS	##
1.	Obtain Help	
2.	Return to Database Menu	
3.	Return to Counties Menu	
4.	Countywide Search	
5.	Situs Zip Code	
6.	Map Page & Grid	
7.	Parcel Number	
8.	City Code	
9.	Lender Name	
10.	Owner Name	
11.	Situs Address	

4. At the Search Options Menu, type the number of the desired search option and press **ENTER**. Options include:
 - **Countywide:** Search the entire county.
 - **Situs ZIP Code:** Search by up to five ZIP Codes.
 - **Map Page and Grid:** Search by parcel map page and up to 10 grid coordinates.
 - **Parcel Number:** Search by parcel number or a range of parcel numbers.
 - **City Code:** Search the entire incorporated limits of a city.
 - **Lender Name:** Search by specific lender.
 - **Owner Name:** Search by property owner.
 - **Situs Address:** Search by property address.
5. At the Property Types Menu, type the number of the desired property type and press **ENTER**.
6. At the prompt, do **one** of the following:
 - Type **A** for Absent Owner (owner does not live on site) and press **ENTER**, or
 - Press **ENTER** for all properties.
7. At the Subselect Menu, type **4** for Date of Notice of Default and press **ENTER**.
8. Type the Notice of Default Date Range (e.g. 01/01/2003-06/01/2003) and press **ENTER**.

Save Your Search

DataQuick Online allows you to save and retrieve additional records that you did not download in your last search.

After you download your data, you can save your search:

1. At the prompt, type **Y** and press **ENTER**.
2. Type **A** and press **ENTER** to return to the Database Menu.

Note: You can only save your searches if you download fewer records than the record count on your search.

Retrieve Saved Searches

1. From the Database Menu, type **K** and press **ENTER**.
2. Press **ENTER** until you reach the State Menu.
3. At the State Menu, type **C** and press **ENTER**.
4. Type **B** and press **ENTER**.
5. Enter the number for the search and press **ENTER** and complete your search.

Ending Your Session

After you download your data, end your session:

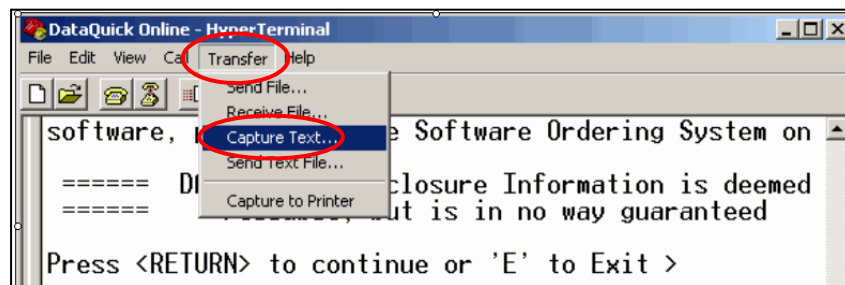
1. Type **A** and press **ENTER** to return to the Database Menu.
2. From the Database Menu, type **2** and press **ENTER**.

Download Data

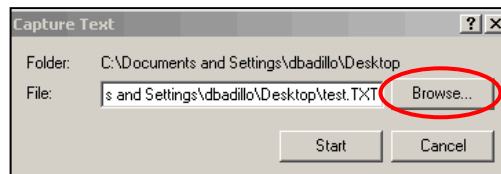
1. At the Format Options Menu, type **5** for Download Format and press **ENTER**.
2. Online displays a statement about the Utility software used to format the data. Press **ENTER**.
3. Type the number of records to download. Enter any number or 9999 to receive the maximum number of records. Press **ENTER**.

Tip: You can also type **0** to get a record count.

4. Online prompts you to Enable Download. Before you download your data, you must set the Capture Text feature. Click **Transfer** and click **Capture Text**.



5. In the Capture Text dialogue box, click **Browse**.



6. In the **Select Capture File** dialogue box, use the **Save In** list to select a location to save your file (Desktop is recommended). Type a recognizable file name in the **File Name** field and click **Save**.
7. Press **ENTER** at the Enable Download prompt. The data scrolls down your screen. The process may take several minutes.
8. Online prompts you to Disable Download. Click **Transfer**, click **Capture Text**, and click **Stop**.
9. At the Disable Download prompt, press **ENTER**. The data is saved to your desktop (or other specified location).

Download ListTools

ListTools is available at no charge. If you have not downloaded a copy:

1. Go to www.dataquick.com.
2. Point to **Products and Services**.
3. Point to **Marketing and Products** and click **ProspectFinder**.
4. Click **ListTools**. Follow the prompts to download and set up ListTools.

Start ListTools

1. Click the windows **Start** button.
2. Point to **Programs**.
3. Point to **ListTools**.
4. Click **ListTools**.

List Types

- **Avery Labels**
Mailing labels.
- **Foreclosure Detail List**
Foreclosure lists with one property on each page.
- **Foreclosure Detail List (5-up)**
Foreclosure list with five properties on each page.
- **Foreclosure Detail List By City or Zip**
Foreclosure lists sorted by city or Zip Code.

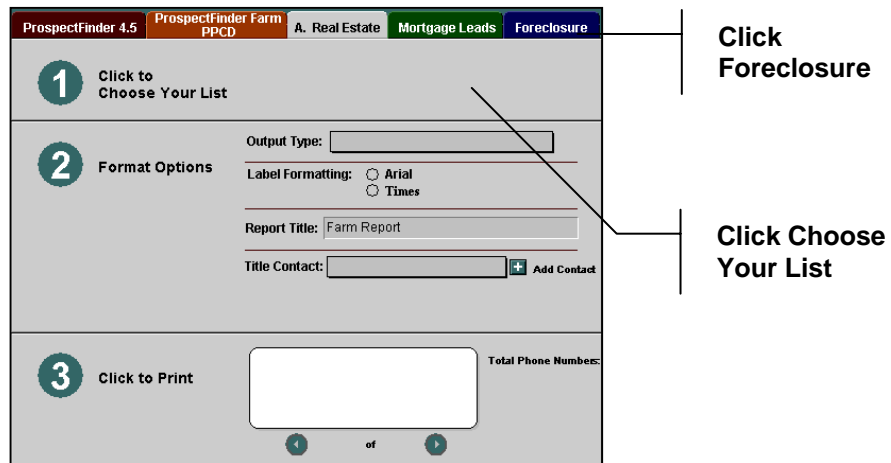
Format Your Data With ListTools

Use DataQuick ListTools to format your data.

1. Click  to start **ListTools**.

Note: If you do not have the ListTools icon on your desktop, see the panel on the left.

2. Click **Foreclosures**.
3. Click **Choose Your List**. The Open File Dialogue box displays.



4. Click the foreclosure list you want to format and click **Open**.
5. Click **Output Type**. The Output type varies depending on the marketing list you want to format (see the panel on the left for details).
6. If you are creating labels, click the label formatting of your choice.
7. Enter the report title in the **Report Title** field.
8. Click **Print**.